

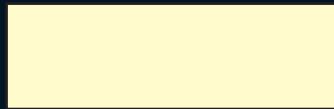
TEMPERATURE GUIDE

Colour chart for forging and hardening

Tempering colours for unalloyed and low alloyed steel

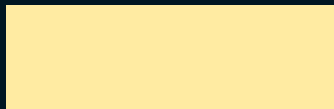
1200° C
2190° F

White



1100° C
2010° F

Light yellow



1050° C
1920° F

Yellow



980° C
1800° F

Light orange



930° C
1710° F

Orange



870° C
1600° F

Light red



810° C
1490° F

Light cherry



760° C
1400° F

Cherry



700° C
1290° F

Dark cherry



650° C
1200° F

Blood red



600° C
1110° F

Brown red



Gray green
330° C
630° F

Gray blue
320° C
610° F

Light blue
310° C
590° F

Cornflower blue
300° C
570° F

Dark blue
290° C
550° F

Violet
280° C
530° F

Purple
270° C
520° F

Red brown
260° C
500° F

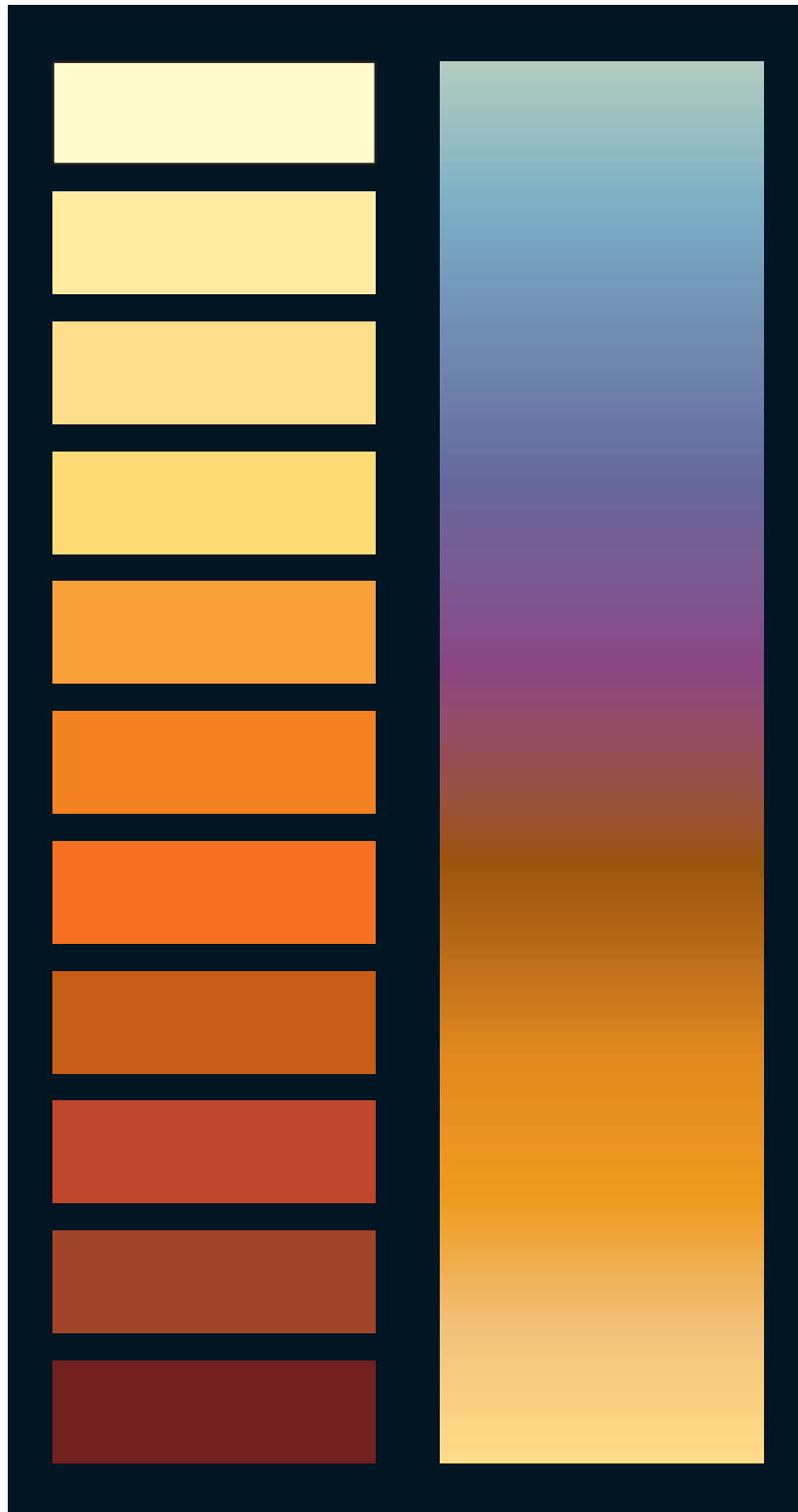
Yellow brown
260° C
480° F

Dark yellow
240° C
460° F

Yellow
230° C
450° F

Strawcoloured
220° C
430° F

Light yellow
210° C
410° F



The colour chart should be viewed in normal diffused daylight and not in sunlight or artificial light.

HARDLINE
HEAT TREATING, INC
508-764-6669 • info@hardlineheattreating.com
"Committed to quality and on time delivery"

Colours assigned to a tempering time of 30 minutes. The colours should be viewed on a polished piece of steel